

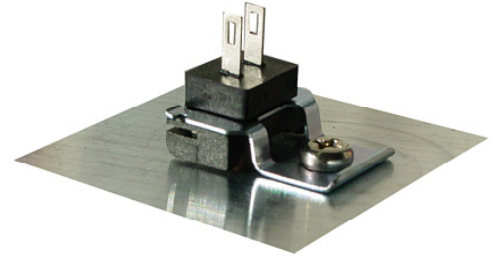
QAR36.130

Clip-on



QAR36.230/330/430/630 QAR37

Clip-on



QAR36.930 QAR39.930

Flat-mounted

## Surface-mounted Temperature Sensors

## QAR...

- The surface-mounted temperature sensors are designed to acquire the temperature of the medium inside pipes
- Clip-on version for fitting onto pipes
- Flat-mounted version for screwing onto flat surfaces
- The QAR... and this Data Sheet are intended for OEMs which use the temperature sensors in or on their products

### Use

- Control or limitation of the flow temperature
- Limitation of the return temperature

### Type summary

Type reference	Pipe dia. in mm	Sensing element	Tolerance	Packing size Weight 5 g / piece
QAR36.130/109	8.8...9.2	NTC 10 kΩ bei 25 °C B(25/85) 3977 K ± 1 %	± 1 K at 60 °C (Excluding conducting error and self-heating effect)	500 pieces
QAR36.230/109	13.5...14.5			
QAR36.330/109	14.5...16			
QAR36.430/109	18...20			400 pieces
QAR36.630/109	22...24			
QAR36.930/109	flat-mounted			
QAR37.430/109	18...20	NTC 10 kΩ bei 25 °C B(25/85) 3442 K ± 1 %	± 1 K at 60 °C (Excluding conducting error and self-heating effect)	400 pieces
QAR39.930/109	flat-mounted	NTC 1 MΩ bei 25 °C B(25/85) 4556 K ± 1 %		

## Ordering

When ordering, please give type reference according to "Type summary" (e.g. **QAR36.430/109**).

## Mechanical design

The sensor consists of black plastic body PA6.6 with embedded sensing element and quick connectors for the cable connection.

The clip-on version has a flexible clip for fitting the sensor directly onto piping. There are no tools required. The pipe's surface must be smooth and free from paint.

For the different pipe diameters, there are different clip sizes available (refer to "Type summary").

The flat-mounted version uses a piece of nearly flat sheet metal in place of the clip for screwing the sensor onto a flat surface. The required fixing screw M4 is not included in the delivery. The contact surface must be smooth and free from paint.

Other versions with other types of sensing elements or other quick connector sizes are available on request.

## Technical data

Standards	Measuring range	5...125 °C
	Short-time	140 °C for approx. 20k operating hours
	Short-time	160 °C for approx. 5k operating hours
	Time constant	< 1 s
	Climatic conditions	to IEC 721-3
	Mechanical conditions	to IEC 721-3
	Product safety	
	Degree of protection	IP 43 to EN 60 529
	Safety class	III to EN 60 529
	Insulation resistance	>10 MΩ
Insulation voltage	>DC 500 V	
Electrical connections	interchangeable	

## Dimensions

Clip-on version QAR36.130	Clip-on version QAR36.230/330/430/630 QAR37	Flat-mounted version QAR36.930 / QAR39.930