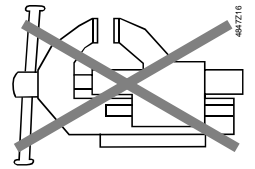
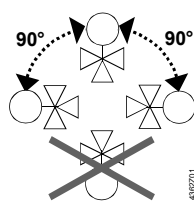


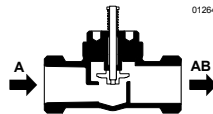
- de** Montageanleitung
- en** Mounting instructions
- fr** Instructions de montage
- sv** Monteringsinstruktion
- nl** Montage-handleiding
- it** Istruzioni di montaggio
- fi** Asennusohje
- es** Instrucciones de montaje
- da** Monteringsvejledning
- pl** Instrukcja montażu
- cz** Montážní návod
- hu** Szerelési útmutató
- el** Οδηγίες εγκατάστασης
- ru** Инструкция по установке
- zh** 安裝指導

- Ventile PN16
- Valves PN16
- Vannes PN16
- Ventiler PN16
- Afsluiters PN16
- Valvole PN16
- Venttiilit PN16
- Válvulas PN16
- Ventiler PN16
- Zawory PN16
- Ventily PN16
- Szelepek PN16
- Βάνες PN16
- Клапан PN16
- 阀门 PN16

VVP469...
VXP469...
VMP469...

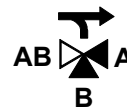
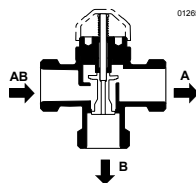


VVP469...

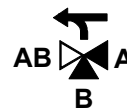
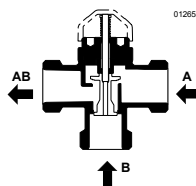


A → AB 0...100%

VXP469...



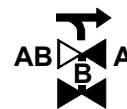
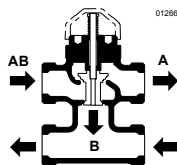
AB → A 0...100%
AB → B 70...0%



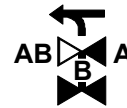
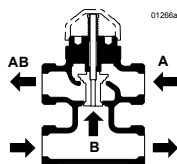
$\Delta p_{max} < 100 \text{ kPa}$, ~~SSA~~

A → AB 0...100%
B → AB 70...0%

VMP469...



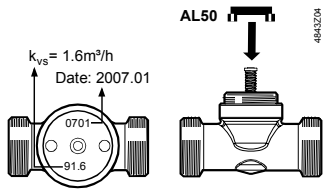
AB → A 0...100%
AB → B 70...0%



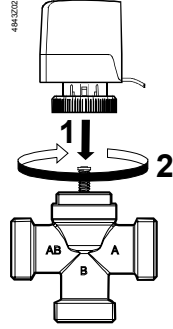
$\Delta p_{max} < 100 \text{ kPa}$, ~~SSA~~

A → AB 0...100%
B → AB 70...0%

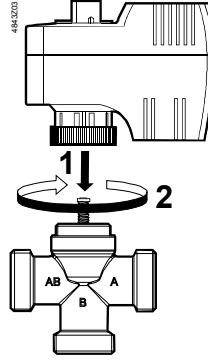
AL50



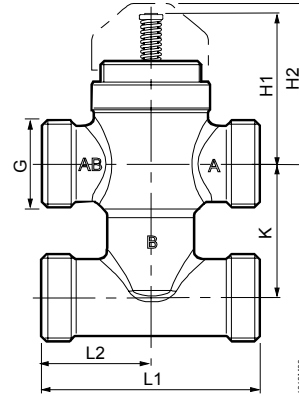
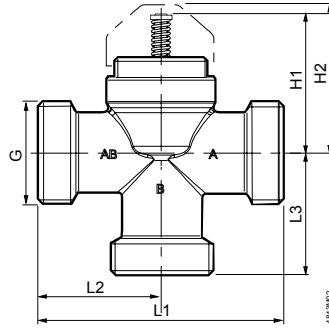
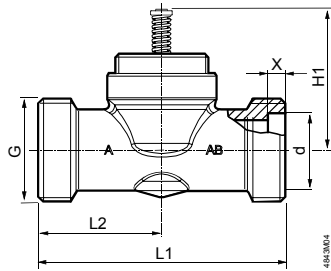
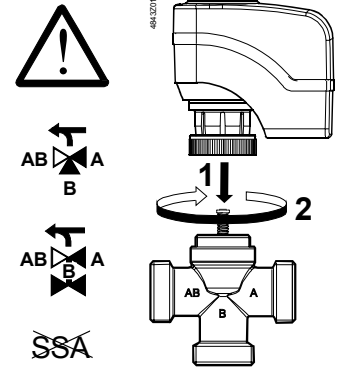
V...P469... + STA219 / STA719 / STS61...



V...P469... + SFA219/18 / SFA719/18 / SUA...

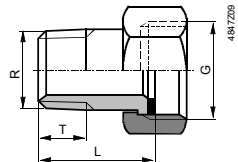


V...P469... + SSA...

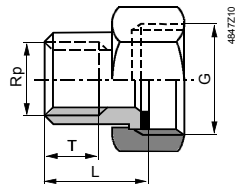


	DN	G ["]	d [mm]	X [mm]	H1 [mm]	H2 [mm]	L1 [mm]	L2 [mm]	L3 [mm]	K [mm]	kg [kg]		
VVP469.10-0.63...1.6	10	G½B	14.2+0.2/-0	5 +0/-0.2	45.2		60	30		40	0.22		
VVP469.15-2.5	15	G¾B	18.2+0.2/-0								65	32.5	0.25
VVP469.15-4													
VVP469.20-4	20	G1B	22.2+0.2/-0								80	40	0.32
VXP469.10-0.25...1.6	10	G½B	14.2+0.2/-0			48	60	30	30		0.27		
VXP469.15-2.5	15	G¾B	18.2+0.2/-0				65	32.5	32.5		0.29		
VXP469.20-4	20	G1B	22.2+0.2/-0				80	40	40		0.40		
VMP469.10-0.63...1.6	10	G½B	14.2+0.2/-0			60	30		0.38				
VMP469.15-2.5	15	G¾B	18.2+0.2/-0								65	32.5	0.46
VMP469.15-4													

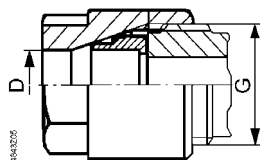
ALG13..., ALG14...



ALG15...



SERTO SO 00021...



ALG...		DN	G ["]	R ["]	Rp ["]	L [mm]	T [mm]	SERTO SO 00021...	D [mm]
ALG132	VVP469.10-0.63...1.6	10	G½	R¾		≈ 24	≈ 9	SO 00021-12-1/2"	12
ALG133	VXP469.10-0.25...1.6							SO 00021-14-1/2"	14
2 x ALG132	VMP469.10-0.63...1.6							SO 00021-15-1/2"	15
ALG142	VVP469.15-2.5...4	15	G¾	R½		≈ 29.5	≈ 12	SO 00021-17-3/4"	17
ALG143	VXP469.15-2.5							SO 00021-18-3/4"	18
2 x ALG142	VMP469.15-2.5...4								
ALG152	VVP469.20-4	20	G1		Rp½	≈ 23	≈ 13		
ALG153	VXP469.20-4								