

SiPass
integrated

SiPass Software

- **Flexible structure for each demand**
- **Easy installation and administration**
- **Expansion modules optionally available**
- **High operational ease by Graphic User Interface**

Access control is one of today's most complex yet important business operations, which helps to increase the security for your facility, valuable resources and staff. SiPass is a Windows based Client server system with a wide range of access control and security features. Its modular architecture allows the installation from lower up to middle market segment.

SiPass is easy to install and simple to administer by its comfortable graphic user interface. SiPass allows you to control access into and around your facility by controlling access to doors, while providing high security through advanced alarm management.

SiPass displays detailed information regarding events that occur at your facility in a split pane Active Audit Trail window, informing you of activity at your facility in real-time. By using the optional available software modules like Photo ID, Image Verification or Guard Tour you can fulfil all requirements of access control.



Standard features of SiPass:

- Anti-Passback
- Siemens SIMATRIX CCTV Switcher Interface
- Siemens DVR Interface
- Support for third party cardholder data import and export via a dedicated tool
- Four-Eyes access control
- AES Encryption
- Support for Siemens RS-485 (SiPass Protocol) and Clock & Data readers
- Automatic and event triggered reporting
- Automated database backup
- Temporary access profiles
- FLN device firmware download from SiPass server
- 3 wrong PIN modes
- Duress PIN mode
- Supports Signature Capture Pad from Topaz
- Dynamic graphical status screen
- Time scheduling
- Instructional alarm response windows
- Programmable holidays
- Individual / group cardholder access
- Manual system override capabilities
- Real-time event and message logging
- Simple colour-coded audit trail log
- Intelligent built-in report generator
- Support for report customization (audit trail)
- Full multi-media alarming
- Colour coded alarm display
- Full system archiving and restore
- Support for most popular reader technologies
- Bulk Cardholder Creation
- Enrolment Reader Support
- Multi-user, multi-tasking environment
- Logon using full password encryption or automatic authentication Windows

- Powerful client / server architecture
- Generic USB camera support for imaging
- Online operator journal
- Intuitive Graphical User Interface (GUI)
- Comprehensive online help system

Advanced features of software extension packages:

- Visitor Management
- Guard tour
- Photo ID and card printing
- Batch card printing
- Image verification
- Configurable messaging to pagers and mobile phones (SMS), using local provider support
- Alarm and message forwarding to other SiPass servers
- Dynamic full-colour graphics
- Support for more than 30 different file formats including AutoCAD files
- Comprehensive symbols library
- Data synchronizer functionality
- Low-Level Elevator access control
- HR API allows cardholder data to be shared among applications
- Card encoding, including bar codes, magnetic stripe and MIFARE smart cards
- CCTV 3rd party high-level matrix switcher interface
- Digital Video Recorder (DVR) 3rd party management interface
- Dedicated Micros DVR Support
- Mifare card enrolment and authentication
- Multiple tenant support
- Server redundancy (Windows 2000 Server)
- Siemens Corporate Card Encoding
- Global Cardholder Information distribution
- Time recording export functionality

Cardholder Management

The SiPass Cardholder Management functionality was designed to tightly integrate effective cardholder management with a wide range of other functions allowing the user to easily manage the cardholder information. In addition to basic cardholder information SiPass offers further information like contact details, car number, address, photo and signature. And this information is not sufficient, up to 196 additional customer data fields are available. All access privileges are fully configurable and can be shown in a short overview screen. All data is protected by the operator partitioning. SiPass also allows you to share the cardholder information amongst other applications using the optional HR interface.

- Operator partitioning protects cardholder data
- Fully configurable access privileges
- Extensive cardholders search facilities
- Up to 14 pages of custom cardholder fields can be created
- Tenants allow the use of multiple card formats at one facility
- Photo ID option allows cardholder photos and signatures to be stored
- Instant recall of cardholder images and records from the Audit Trail
- Allowance for cardholders with disabilities
- HR Interface allows cardholder data to be shared among applications

The screenshot shows a 'Cardholder' management window with several tabs: Definition, Personal, Vehicle, Imaging, Tracking, and Control. The 'Definition' tab is active. It contains a 'Cardholder Identification' section with fields for Card Number (9569326984), Employee Number, Last Name (Smith), First Name, a checkbox for '2nd Card No.', and 2nd Pin Number. A 'Workgroup Id' dropdown menu is set to 'Visitor'. Below this is an 'Access Control' section with a large empty text area. At the bottom, there are fields for Pin Number, Card Status (Valid), Start Date (16.07.2004), and End Date (16.07.2004). A 'General Data' section is also present with a large empty text area. At the bottom of the window are buttons for 'Encode Card', 'Read Card', and 'Assign Card'.

Database Partitioning

The SiPass advanced database partitioning safeguards your facility's records ensuring complete integrated security. This security starts with the secure authentication to the SiPass system, which can be done via a logon using full password encryption or automatic authentication Windows. Configurable profiles for each individual operator allow the assignment of privileges. These privileges are partitioned as:

- Audit trail messaging
- System functions
- Cardholders
- Points
- Graphic Maps
- Reports

The screenshot shows an 'Operator Group' configuration window with tabs for Operator Group Name, System Function, Point Group, Work Group, Plan, Audit Trail Reports, and Custom Pages. The 'Operator Group Name' dropdown is set to 'Administrator'. Below this is a 'Display Audit Trail messages' section with checkboxes for Logon/Logoff, Alarm actions, Event Task, Configs actions, and Database actions. There is also a checkbox for 'Group Lock Out'. At the bottom are buttons for 'Save', 'Delete', and 'Close'.

Alarm Handling

The ability to handle alarms quickly and efficiently is crucial to an access control and security system. SiPass' Alarm Handling gives you ultimate flexibility when responding to alarm and emergency situations at your facility. Up to 1000 custom Alarm Priorities can be created in SiPass, allowing you to prioritize a huge number of alarm scenarios. Depending on operator preference, alarms can be actioned from the Alarm Queue window, a popup warning dialog or a Graphic Map of the facility.

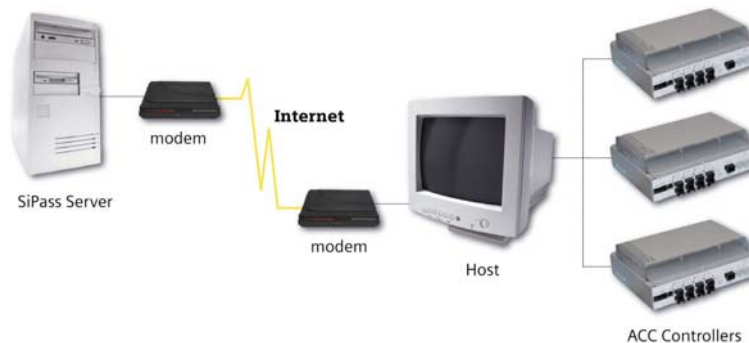
- 1000 configurable Alarm Priorities
- Send alarm details to OPC-compliant software applications
- Graphic Maps updated in real-time
- Alarm instructions outline the correct responsive action every time
- Multiple ways to action alarms
- Alarm Queue can be sorted to show alarms in variable order
- Alarms of higher priority can over-ride current operator activity
- System rechecks alarm status automatically
- Configurable Alarm Classes for each system component
- Create predefined Alarm Responses

Status	Status Description	Alarm/Restore	Symbol Name	Dial Back
Alarm	Breakglass Activated	Alarm	Breakglass Activ...	No
Normal	Breakglass Reset	Restore	Breakglass Normal	No

Remote Access

Remote communications are an essential component of any modern access control and security system. SiPass continues to provide solutions for facilities of any size or structure, with Dialup and Virtual Private Network (VPN) access for the ACC series of Hardware. SiPass Remote Access has been specifically designed to work in tandem with the secure, flexible and fast architecture of the SiPass system itself.

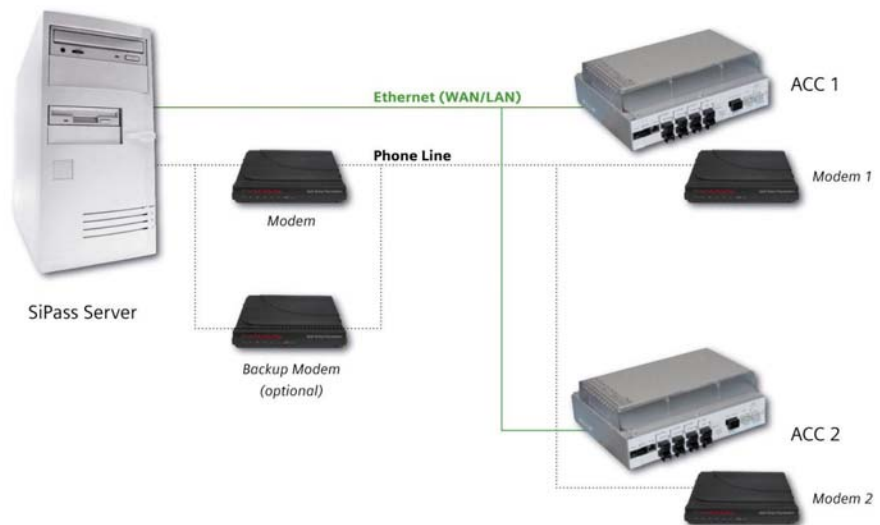
- Multiple ACC's on a single remote connection
- Secure encryption and transmission of data
- Automatic connection back to the SiPass server when remote Audit Trail buffers approach capacity



Communication Redundancy



Protecting the communications link between the Server and the hardware controllers is critical to ensure the highest standard of access control. SiPass has a number of integrated options that provide superior communications channel backup and redundancy without requiring major restructuring of a network or the purchase of expensive third party applications.

- Built-in communications redundancy uses existing network architecture
- Dialup redundancy in case of Ethernet communications loss
- Automatic dial-in to Server from ACC's when network is offline
- ACC redials Server at configurable intervals if line is busy
- Backup phone number and modem provide double protection



Software basic packages

The SiPass access control software is available in different basic packages depending on the size of the access control installation. If a system expansion is required in the future, a software upgrade is always possible.

Basic Packages	Description
 SiPass Standard	24 doors 1.000 cards 1 server 1 client MSDE data base (If more than 10.000 cardholders or 5 clients a SQL data base ¹ is required) Expansions or options available
 SiPass Optima	64 doors 10.000 cards 1 server 3 clients SQL data base ¹ Expansions or options available

Software Extensions

The following extensions are available for the packages SiPass Standard and Optima. The extensions can be installed in multiple sites

Extension	Description
Data base extension for 1.000 cards	The SiPass database is extended for additional 1.000 persons.
Data base extension for 8 doors	The SiPass data base is extended for additional 8 doors

¹ Is not included in the software package

Software Upgrade Packages

The following packages are available for software upgrade.

Upgrade package	Description
Upgrade Starter – Standard	Data base extension to SiPass Standard package
Upgrade Standard – Optima	Data base extension to SiPass Optima package

Optional Software Extensions

For software extensions the following modules are optionally available. For installation of these modules a SiPass Standard or Optima package is required. For further details please see the respective product sheets.

Type	Part no	Designation
ASE5100-WS	6FL7820-8AE00	Additional Workstation
ASE5300-CW	6FL7820-8AE01	CCTV Capability on a SiPass Workstation
ASE5300-ID	6FL7820-8AE02	Photo ID and Image Verification
ASE5300-MF	6FL7820-8AE03	Message Forwarding
ASE5300-AP	6FL7820-8AE04	HR Application Programming Interface (API)
ASE5300-VM	6FL7820-8AE05	Visitor Management
ASE5300-LE	6FL7820-8AE06	Low-Level Elevator Management
ASE5300-GT	6FL7820-8AE09	Guard Tour
ASE5300-DS	6FL7820-8AE14	Data Synchronizer
ASE5300-GP	6FL7820-8AE17	Graphics
ASE5300-CB	6FL7820-8AE19	CCTV 3 rd Party High-Level Matrix Switcher Interface
ASE5300-ME	6FL7820-8AE20	Mifare Encoding
ASE5300-DV	6FL7820-8AE21	Digital Video Recorder (DVR) 3 rd party Interface
ASE5300-TR	6FL7820-8AE22	Time Recording Export
ASE5300-TE	6FL7820-8AE24	Additional Site/Facility Code

System Requirements

Hardware

SiPass Server:

Operating system	Windows XP Professional (SP2) Windows XP Home (SP2) Windows 2000 (SP4) Windows 2000 Server Windows 2003 Server
DBMS	MS SQL Server 2000 (SP3a) Microsoft MSDE (SP3a), up to 5 clients and 10.000 cardholders
Processor	Pentium IV
RAM	Min. 512 MB, 1024MB recommended
Hard disk drive	80 GB
Ports	Ethernet 10Mb / 100MB

SiPass Client:

Operating system	Windows XP Professional (SP2) Windows XP Home (SP2) Windows 2000 (SP4) Windows 2000 Server Windows 2003 Server
Processor	Pentium IV
RAM	Min. 256 MB
Hard disk drive	40 GB
Client Server Architecture	Yes
CCTV capability	To view live images from CCTV matrix switcher, a video capture card is required.
Ports	Ethernet 10Mb / 100MB

Details for ordering

SiPass standard software license (license only)

Type	Part no	Designation
ASL5000-SE	6FL7820-8AA10	SiPass Standard Edition
ASL5000-OA	6FL7820-8AA20	SiPass Optima

In addition to the licence the SiPass software CD has to be ordered in the requested language.

Type	Part no	Designation
ASB5000-EN	6FL7820-FD10	SiPass Software CD (English)
ASB5000-DE	6FL7820-FD11	SiPass Software CD (German)
ASB5000-FR	6FL7820-FD12	SiPass Software CD (French)
ASB5000-NL	6FL7820-FD13	SiPass Software CD (Dutch)
ASB5000-ES	6FL7820-FD14	SiPass Software CD (Spanish)
ASB5000-PL	6FL7820-FD15	SiPass Software CD (Polish)

SiPass extensions for SiPass Standard Edition and SiPass Optima

Type	Part no	Designation
ASE5100-BA	6FL7820-8AD10	Data base extension for 1.000 cards
ASE5100-DO	6FL7820-8AD20	Data base extensions for 8 doors

SiPass Upgrade for Standard software

Type	Part no	Designation
ASU5000-SN	6FL7820-8AB00	Upgrade Starter – Standard
ASU5000-NO	6FL7820-8AB10	Upgrade Standard – Optima

Issued by
Siemens Building Technologies
Fire & Security Products GmbH & Co. oHG
D-76187 Karlsruhe

www.sibt.com/fs

© 2005 Copyright

Document no. **A24205-A335-B119**
Edition 06.2005