

Moduflex · Type series SK / SKV

Differential pressure transmitter

for air-conditioning / ventilation – pressure ranges adjustable with jumper

Product description and applications

Differential pressure transmitter – in 3-wire technology, with an output signal of 0–10 V (± 1 mA), for air conditioning and other ventilation applications, e. g. for filter monitoring, pressure or flow control, max. pressure control etc.

The transmitter can be used for over pressure (pressure connection to +), for vacuum (pressure connection to –) and for differential pressure (high pressure to +, low pressure to –).

Technical data

Supply voltage	18...24...30 VAC, 50/60 Hz or 16...24...32 VDC
Operating voltage	24 VAC ± 20 % or 24 V...36 VDC
Pressure connection	$\varnothing 5 \times 11$ (for flexible hose dia $i = 5$ mm)
Degree of protection	IP 65
Medium temperature	–10 to 70 °C Max. 95 % r.F. relative humidity
Ambient temperature	0–50 °C (compensated range)
Output signal	0–10 V, ± 1 mA with jumper invertable. with potentiometer, if needed
ZERO-Offset	
Linearity and hysteresis error	Max. ± 1.2 % FS, SK 20 max. 2.3 %, typ 0.4 %
Temperature drift	(0–50 °C) Max. ± 0.25 %/K
Maximum perm. pressure	20 kPa
Accessories included in delivery:	– mounting bracket H 11 including 2 screws – Accessory kit SK-K consisting of 2 m of silicone hose 2 joining pipes with extensions 4 screws 1 spare jumper

Optional accessories plug-in bracket H 12 for mounting on DIN rail, e. g. in cabinet.

Type summary



Nominal and adjustable ranges Pa	without Display Type	with LED–display Type
0 to 1000 0 to 500 with jumper adjustable 0 to 200	SK 10 SK 5*	SK 10-AK SK 5-AK*
0 to 2000 0 to 1000 with jumper adjustable 0 to 400	SK 20	SK 20-AK
-500 to +500 (fixed) -1000 to +1000 (fixed)	SKV 5 SKV 10	SKV 5-AK SKV 10-AK

* SK 5 is technically identical with SK10, but the product will be delivered with the frequently used jumper setting 0–500 Pa ex-factory. This avoids changing the jumper when 0–500 Pa is needed.

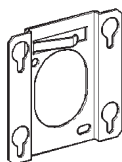
Accessories

LCD-display (in Pa), integrated in housing lid (when ordered separately).

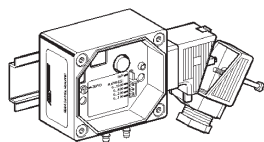
AK-SK

Plug-in bracket for mounting on DIN rail

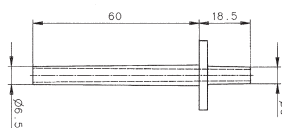
H 12



Mounting bracket H 11



Mounting on DIN rail with plug-in bracket H 12



Joining pipe with extension DPS-J